

Sirius Pintuition

Designed for tissue-sparing tumor surgery

Non-Confidential Pitch Deck

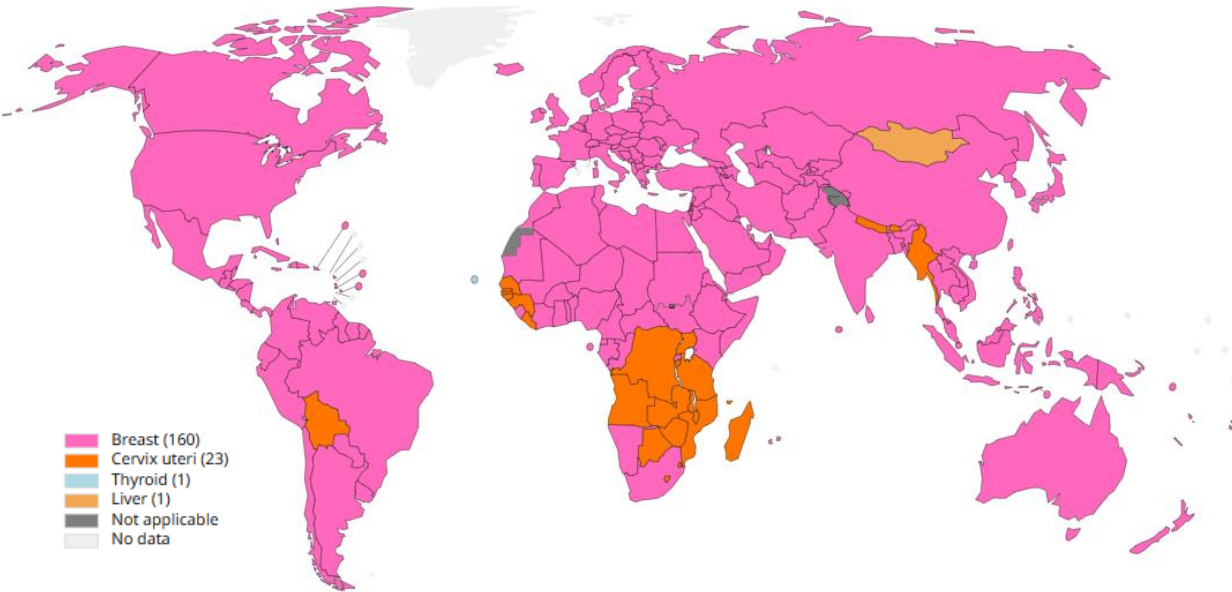
Bram Schermers, CEO/CTO

Simple | Precise | Affordable

Breast Cancer is The Most Common Female Cancer in the World...

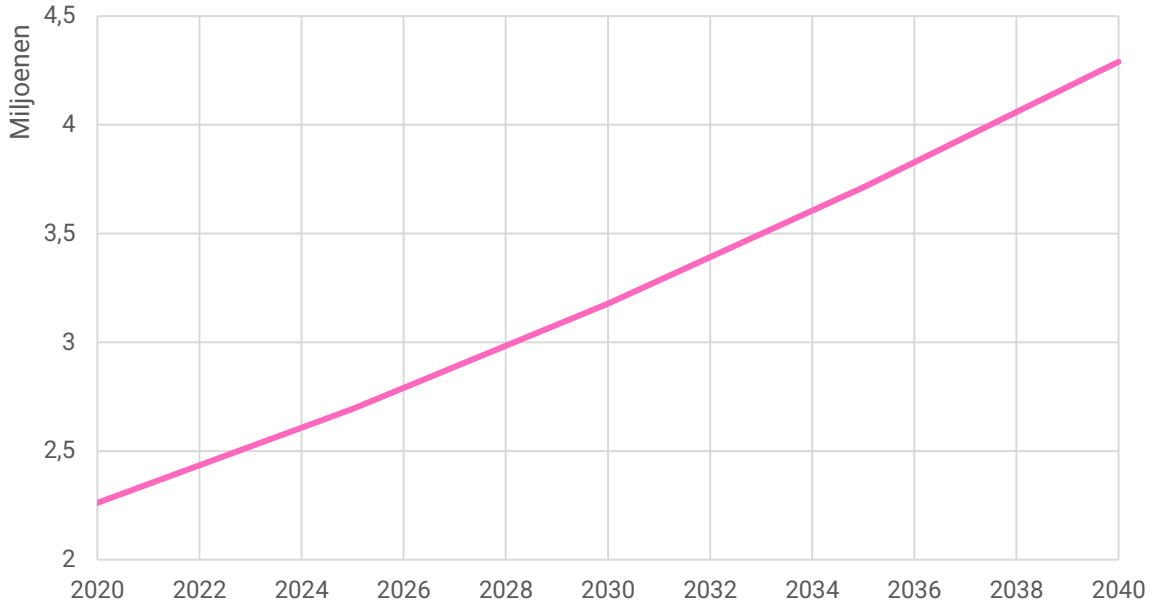
...with 2.5M Cases Per Year in 2024 and Growing to 4.0M+ in 2040.

Top cancer per country, estimated age-standardized incidence rates (World) in 2020, females, all ages (excl. NMSC)



Data source: GLOBOCAN 2020
Map production: IARC (<http://gco.iarc.fr/today>)
World Health Organization

Estimated number of global new breast cancer cases per year, females, all ages



Cancer Tomorrow | IARC - All Rights Reserved 2024 - Data version: 2020

In 50% of breast surgeries, surgeons require technology to help them navigate to the right location...



Screening programs uncover 50% of breast tumors early, when they are still small and 'non-palpable'



Surgeons cannot see or feel these tumors and require technology to guide them



An anchor wire marks the location and guides the surgeon

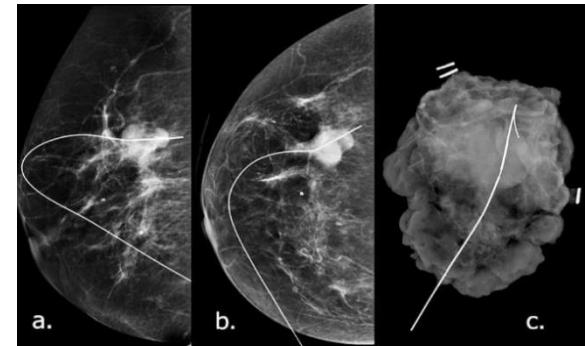
...But they have to rely on rudimentary anchor wires or poorly performing first-generation wire-free technologies to get the job done.



Examples of Anchorwires



Patient with an Anchorwire Protruding from the Breast – waiting for Surgery to Start



Patient with an Anchorwire in breast (a-b; mammography). Specimen X-ray after surgery (c).

Sirius Pintuition: Unique Technology Platform for Simple Navigational Guidance

3 The **Pintuition Base Unit** offers real-time audio and visual feedback with navigational guidance towards the marked tissue.



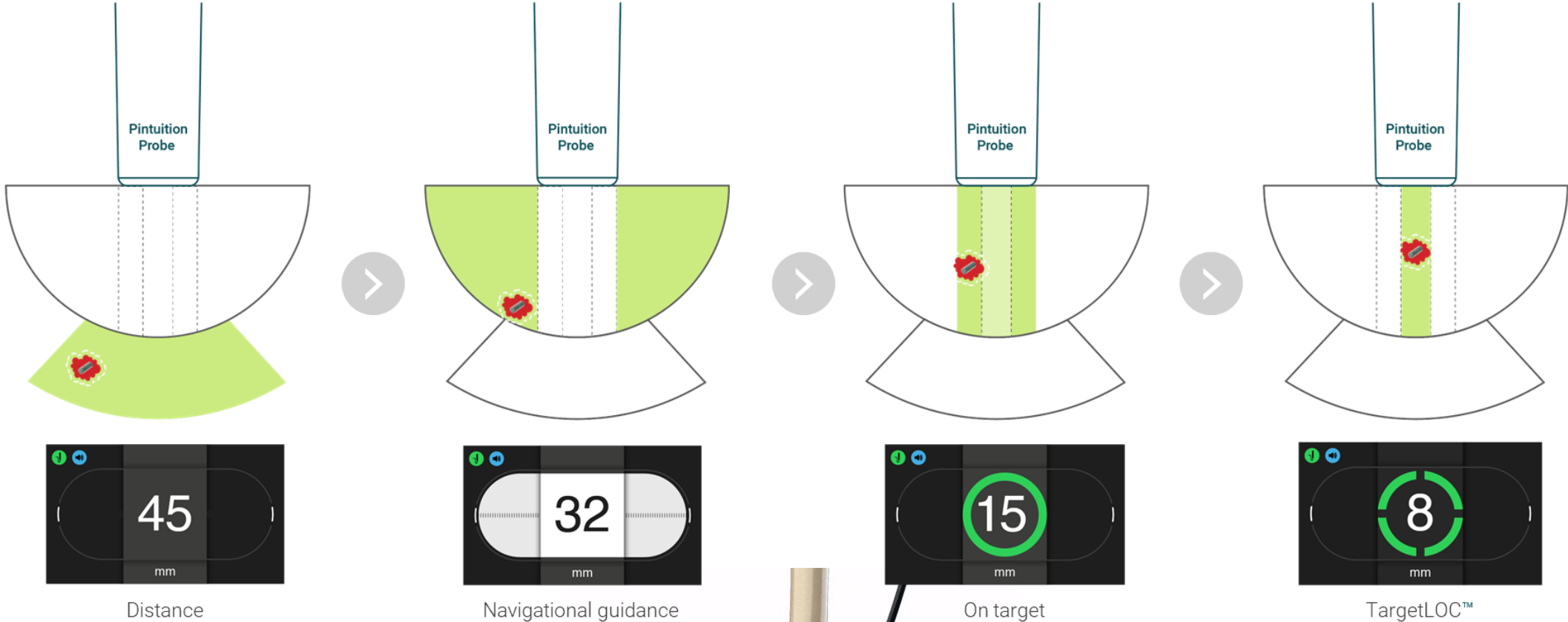
The Pintuition Probe accurately and precisely locates the seed during surgery

2

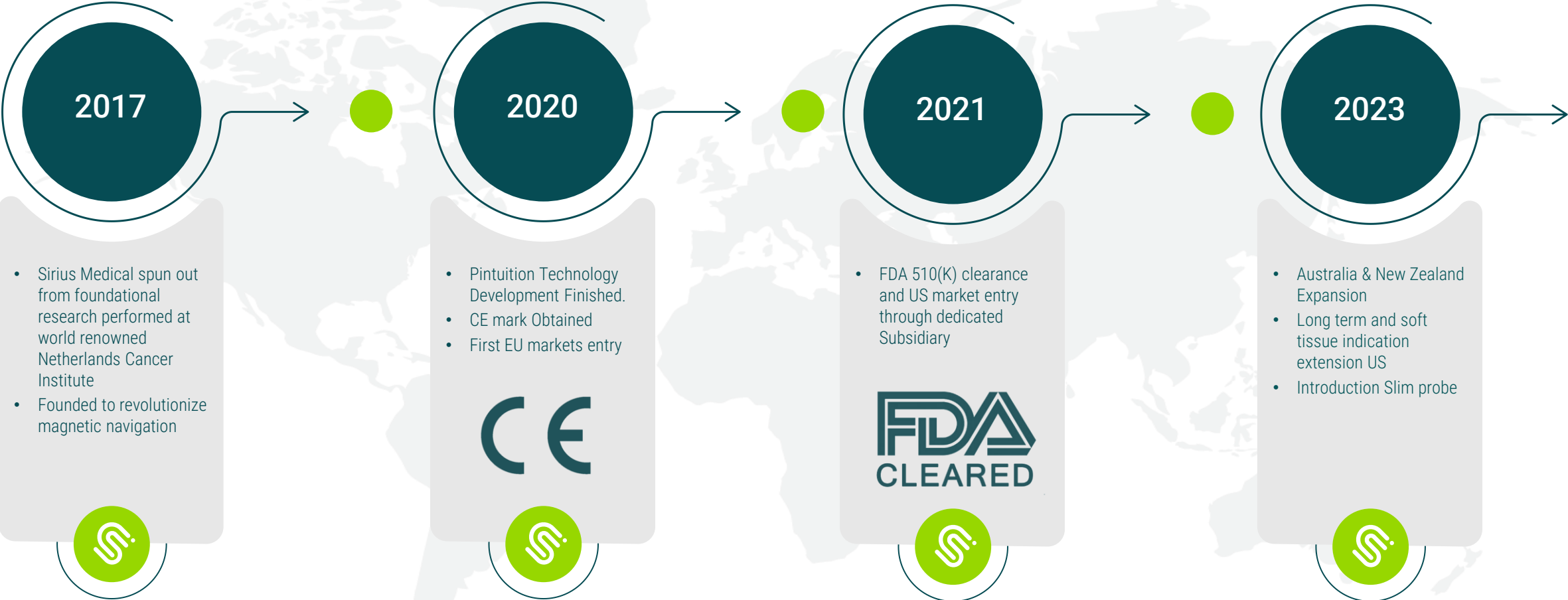
1 The **Pintuition Seed** is a tiny permanent magnet implanted to mark a tumor location



The GPSDetect™ Software Platform Provides Intuitive Visual and Audible Feedback for Simple and Effective Navigational Guidance Towards the Target



From Spin-out to CE and FDA Stage in Four Years; Rapid-Growth Scale-Up Today.



Global Experience using Sirius Pintuition



32.500+ patients



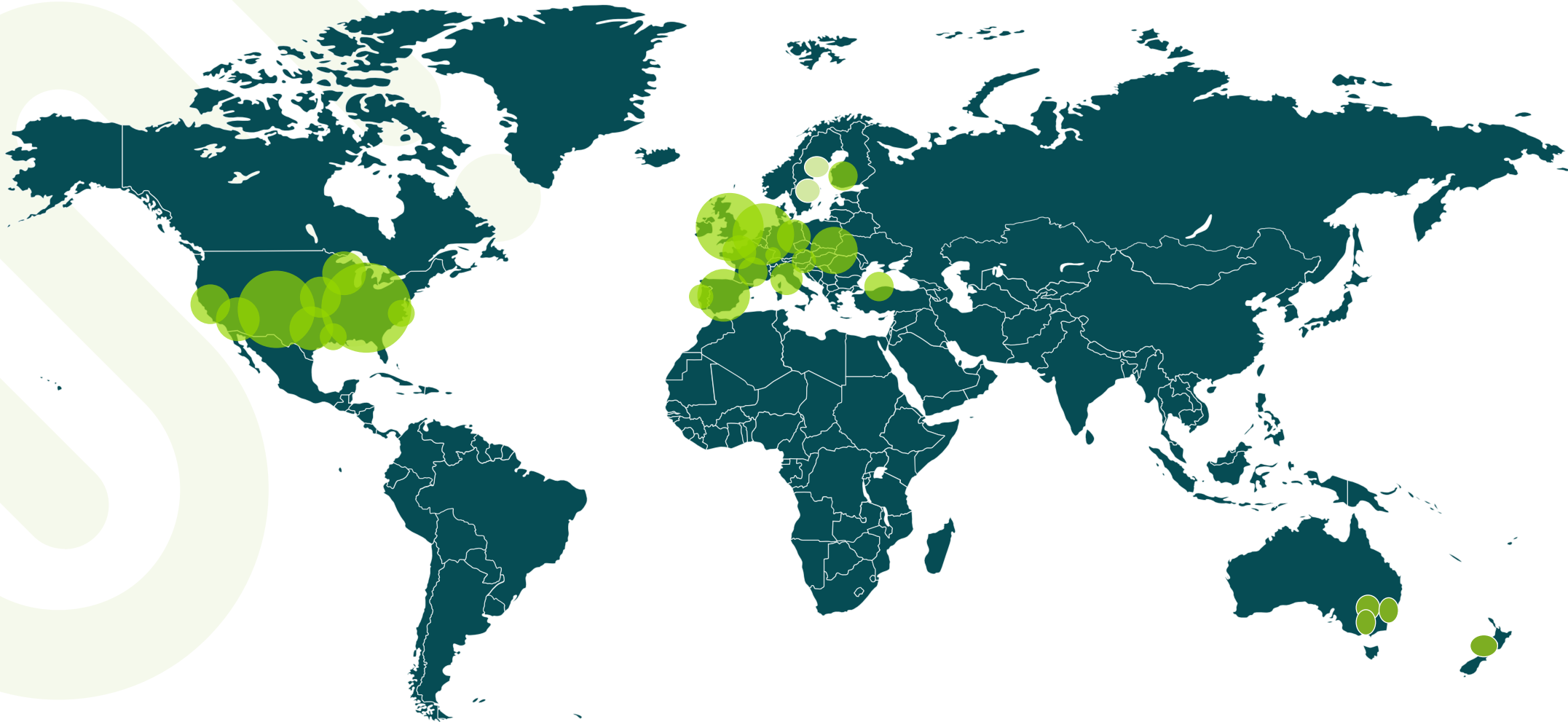
22 countries



225+ hospitals



6M€ Revenue
(2024 Guidance)



Geographical Footprint of Sirius Medical: Spanning Twenty+ Geographies

- Direct Representation:**
- NL
 - UK
 - DACH (DE, AT, CH)
 - USA



- RMS** MEDICAL DEVICES
Belgium
- Edimex**
équipements scientifiques & médicaux
France
- CARLO BIANCHI**
tecnologie chirurgiche
Italy
- THEMEDTECH CONNECTION**
Iberia

Legend:

- Direct
- Indirect
- Next to Open

- MEDTEG**
Greece, Cyprus (2024)
- AspironiX**
Poland, Czechia, Slovenia
(2023-2024).

SURGEONCHOICE
INNOVATION BY DESIGN
Australia (2023)

SURGICAL SUPPLIES
New-Zealand (2023)

HealthLink
Europe & International
A BASE LOGISTICS COMPANY
Global Logistics

sirius medical 