

venture  
challenge

1<sup>st</sup> place  
June 2024

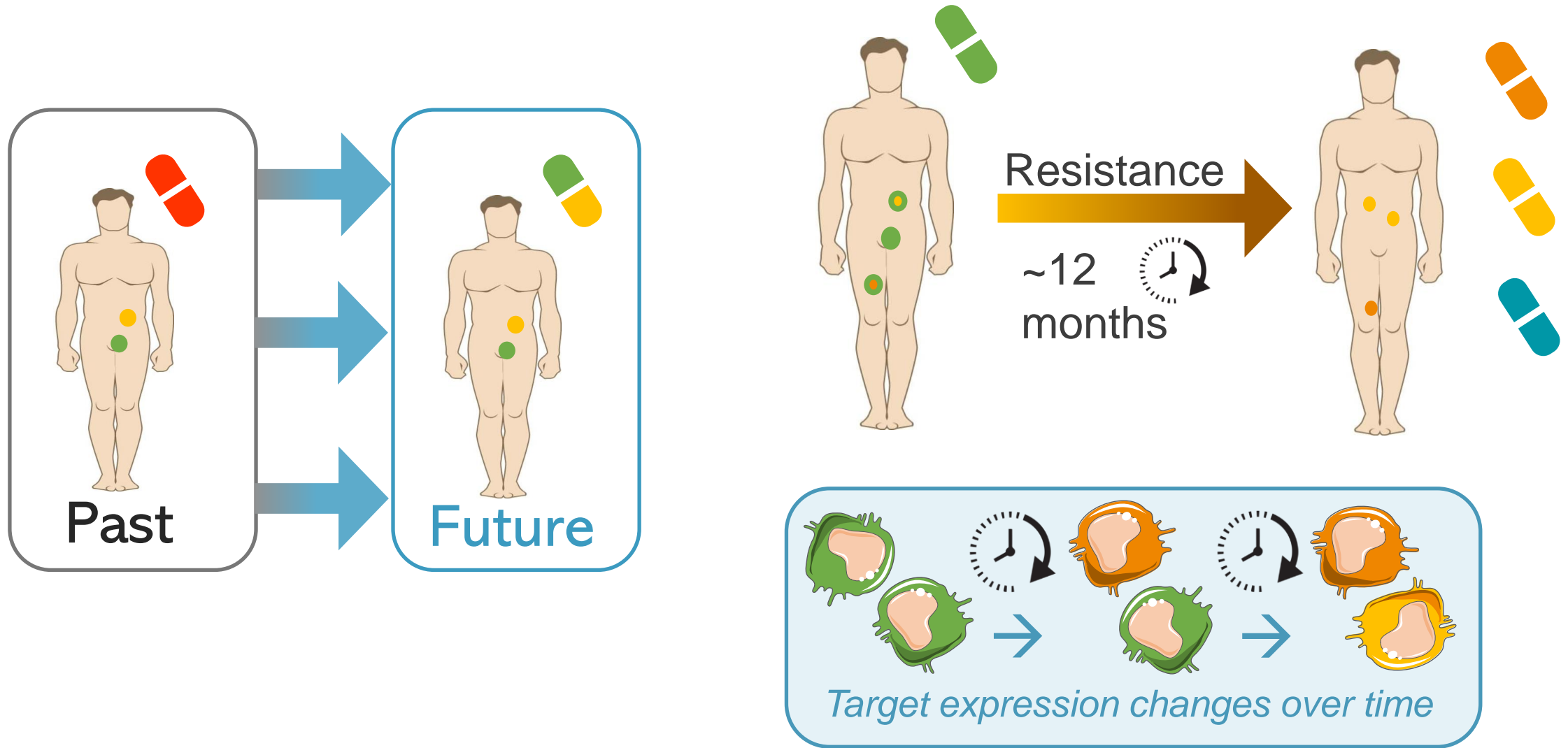
1<sup>st</sup> place  
August 2024

ENSCHÉDE SLUSH'D  
PITCH COMPETITION

**FETCH**  
ALWAYS ON TARGET

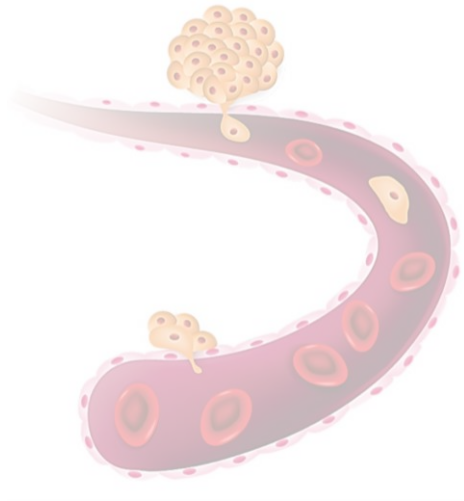
*FETCH provides treatment target  
information for precision oncology*

# Targeted therapy requires target information



# Circulating tumor cells offer solution

Circulating tumour cells (CTCs) represent active part of disease



Cancer spreads through cells in the blood

A larger blood volume should be screened



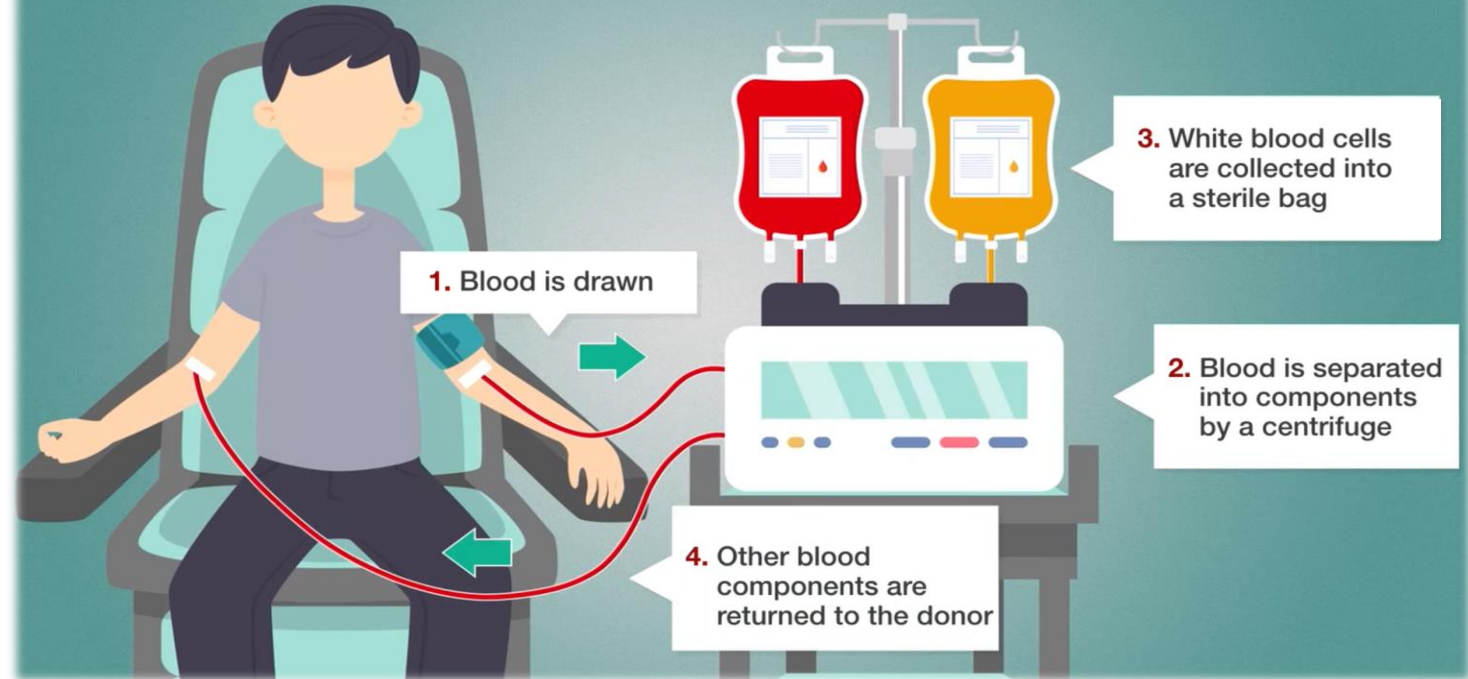
Blood tubes contain insufficient CTCs

# More CTC in leukapheresis

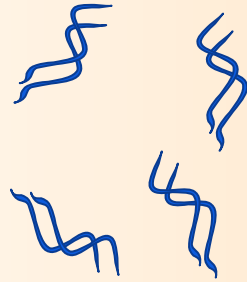
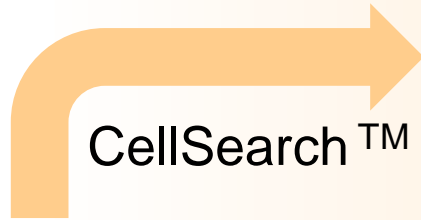
**200** times more circulating tumour cells than a blood tube

*Researchers used only ~2% of the sample due to capture and clumping of white blood cells<sup>1</sup>*

- *Safe and approved*
- *Available in hospitals*
- *Used for immune therapy cell collection*



# FETCH improves tumor cell capture

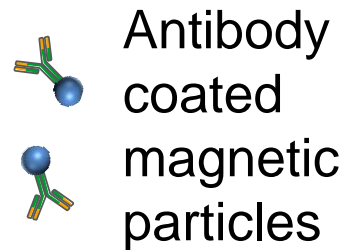
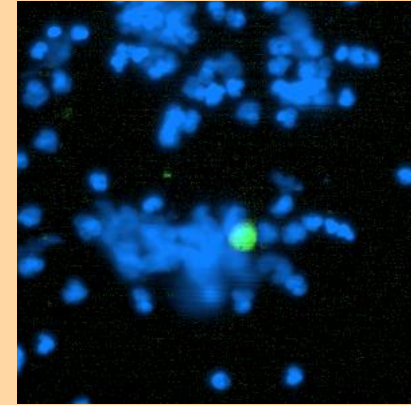


Magnet

1. Non-specific capture

2. Clumping of cells

3. Limited CTC yield



FETCH Magnet

1. Improves specificity

2. Prevents clumping

3. Increases CTC yield

Novel

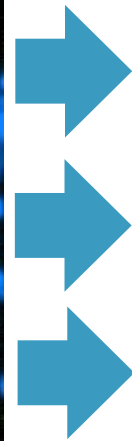
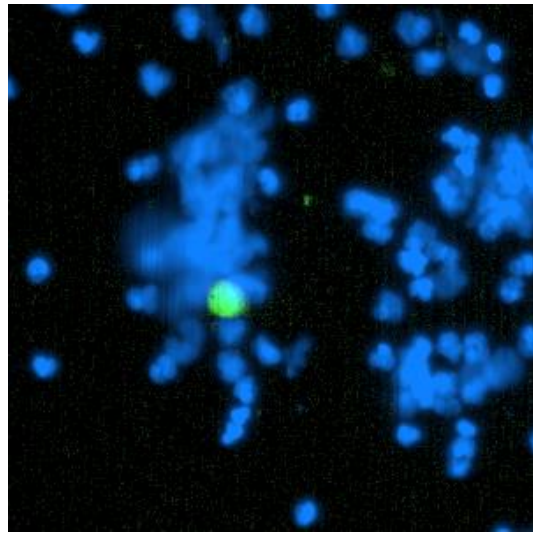


Inventive

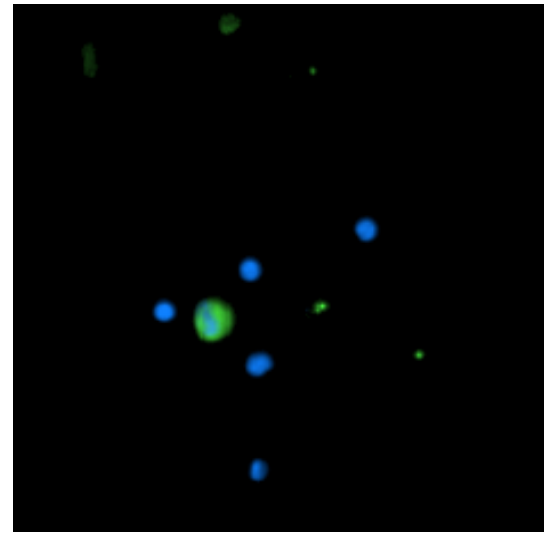


# Clinical samples confirm improvement

CellSearch®



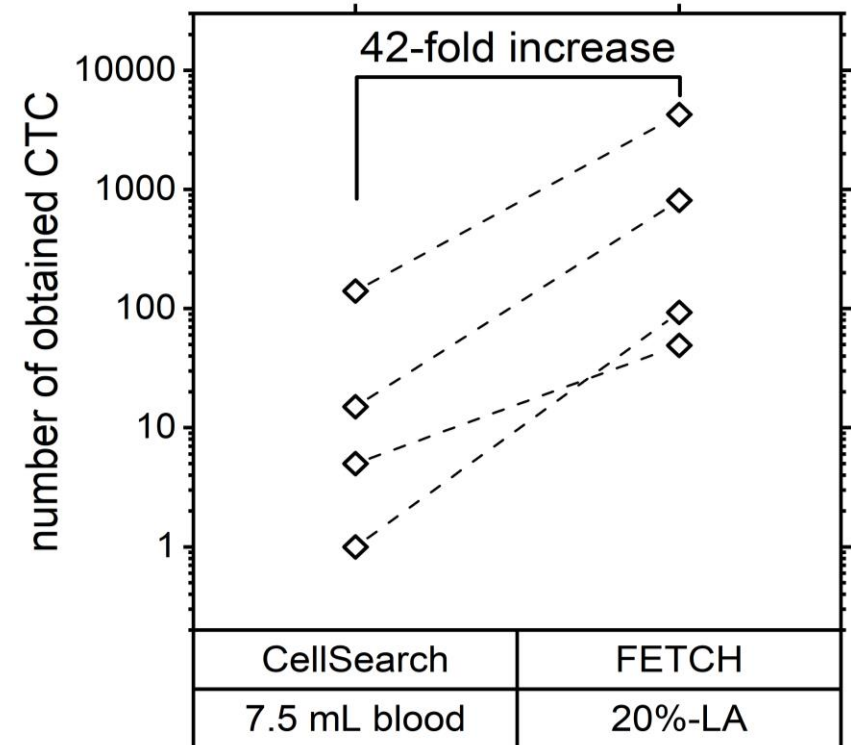
FETCH



20 prostate cancer patient samples:  
FETCH prevents clumping and reduces non-specific capture by 5-fold without CTC loss<sup>1</sup>

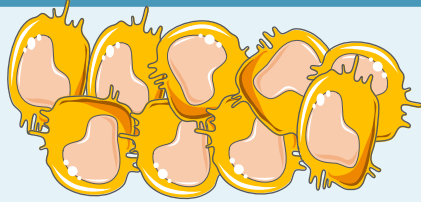


20% of the leukapheresis (LA) gives  
42-fold increase in CTC<sup>1</sup>, in line with  
total 200-fold increase



# Competition

Biopsy



Invasive &  
Single site

ctDNA



\* Circulating tumour DNA

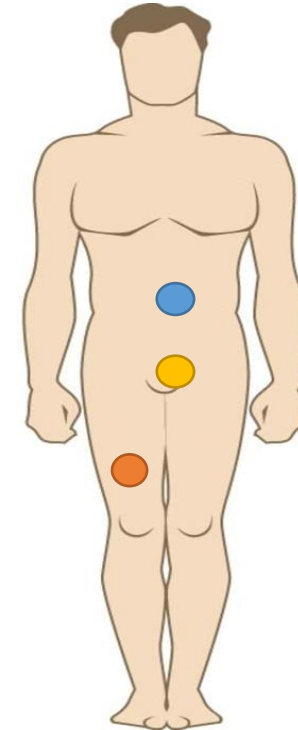
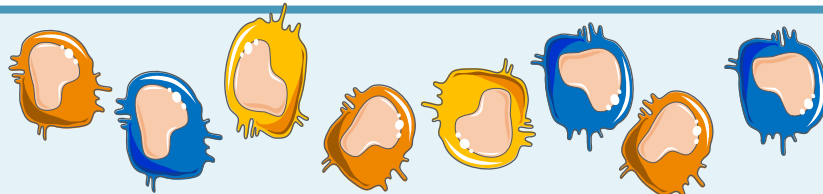
No protein  
expression

Blood tube CTC



Low  
sensitivity

FETCH

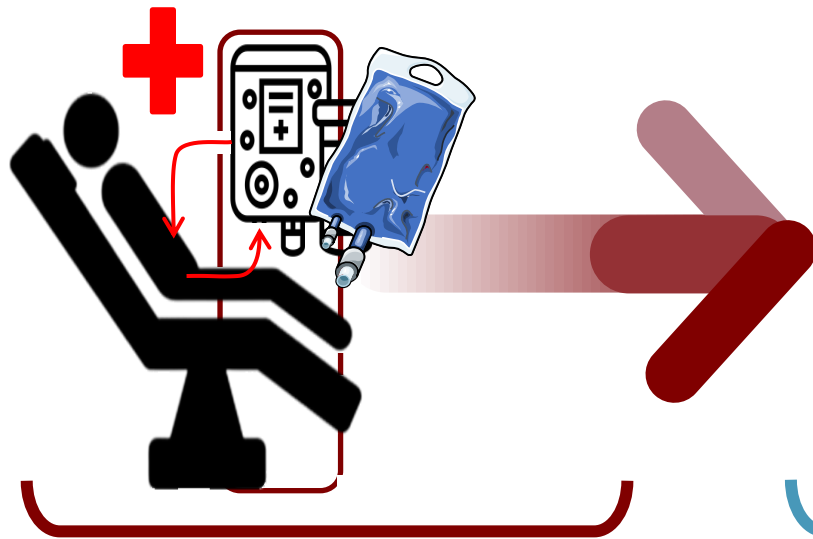


Only **FETCH** reliably  
detects **protein** targets  
from the **entire** disease

# Leukapheresis already approved

## Clinical center

Standard procedure

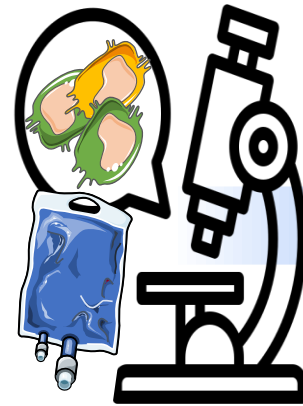


Medicare reimbursement  
blood tube CTC testing: \$2516

## The **FETCH** service

Centralised processing

Report



⊖ €7.5k per analysis



# Team includes medical and business experience



**Michiel Stevens, PhD**

*CEO*

Inventor of FETCH technology with >10y of commercial development experience



**Tom Niessink, PhD**

*CTO*

Previously worked on the clinical implementation of a diagnostic device

**UNIVERSITY OF TWENTE.**



**Prof. Leon Terstappen**

*Business/scientific advisor*

Former CSO CellSearch, CTC expert

**UNIVERSITY OF TWENTE.**



**Prof. Nikolas Stoecklein**

*Medical advisor*

Initiator of leukapheresis for CTC

**UKD** Universitätsklinikum  
Düsseldorf

Clinical partners



**UKD** Universitätsklinikum  
Düsseldorf



**umcg**



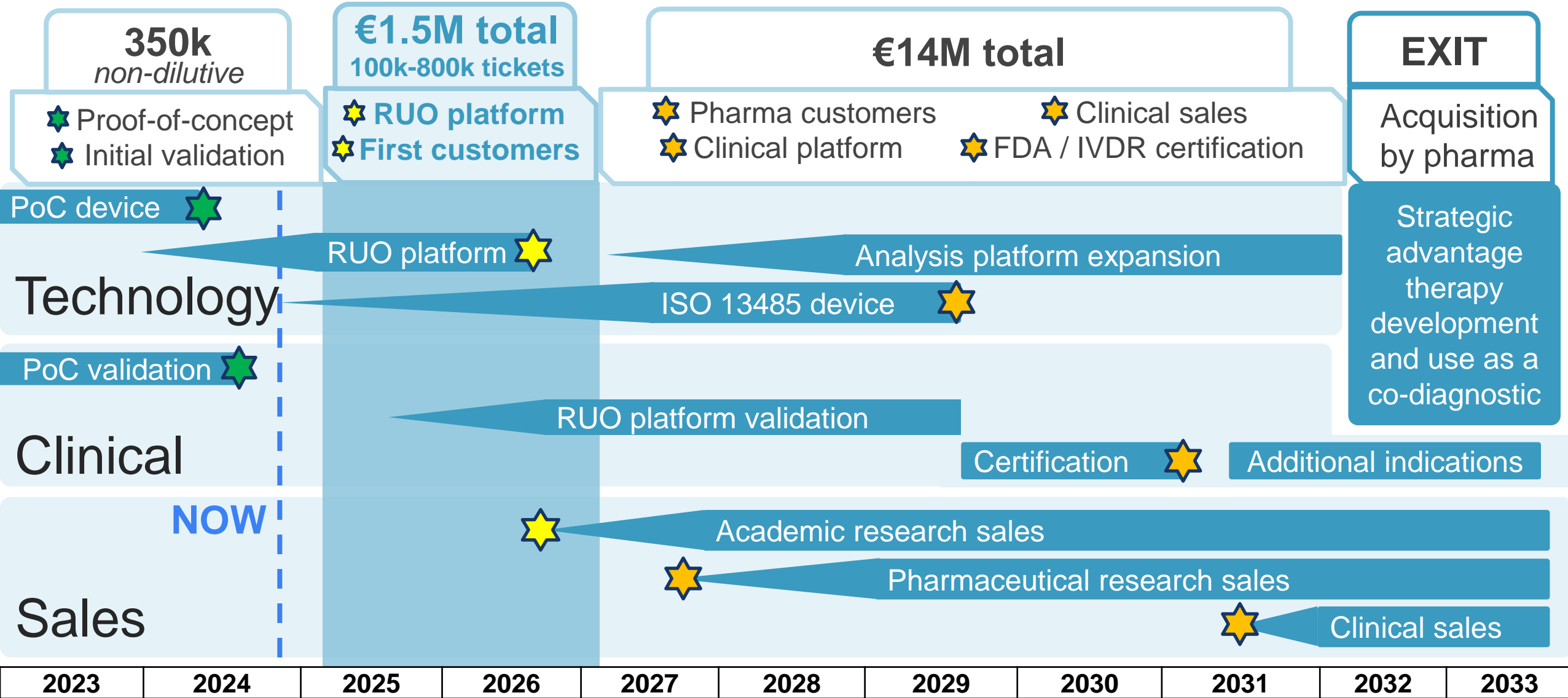
Supported by

**NovelT**

Science **4** Life

**UNIVERSITY OF TWENTE.**

# FETCH now offers an investment opportunity





**Contact:**

**E: [info@FETCH-research.com](mailto:info@FETCH-research.com)**

**T: 0031 (0) 534 89 4101**

**[www.FETCH-research.com](http://www.FETCH-research.com)**

**Visiting address:**

**FETCH bv**

**Hallenweg 23, Carre 4417**

**7522NH Enschede, the Netherlands**